



Y2K
COMPLIANT

**WIRING DIAGRAM AND SOFTWARE
INSTALLATION OF THE UGM**

- I. INTRODUCTION..... 2
 - A. Control unit..... 2
 - B. Dip switches on the control unit 2
 - C. Readers 3
 - D. Elevator relay boards 3
- II. GETTING STARTED..... 3
- III. Installation OF THE UGM SOFTWARE..... 3
- IV. Annex 7
 - A. Recommended printer..... 7
 - B. Connectors on the UGM..... 8
 - C. Connectors of the reader..... 9
 - 1. LED status 9
 - 2. 16 points connector..... 9
 - 3. 3 points connectors 1,2, 3 & 4, 5, 6..... 10
 - 4. Jumper ST1..... 12
 - D. Description of the connectors on the lift relay board..... 12
 - 1. Configuration of the lift boards..... 13
 - 2. 11 points connector..... 13
 - 3. 9 points connector..... 13
 - E. Wiring diagram between the UGM, the readers and the lift relay boards..... 15
 - F. Communication port on the UGM 16
 - G. KCM keypad 17
 - 1. Description 17
 - 2. How to operate 17
 - H. Infrared remote control..... 18
 - I. Recording reader (badge enroller)..... 19

C. READERS

- The antenna is connected to the reader by 2 or 3 wires according to the technology used (1.5 m maximum), and 3 wires for the multicolor led, if this one is present on the antenna.
- Wiring to the control unit by using 2 wires (Bus RS485, twisted pair, category 5)
- Connection of different technology on the unit (contact key, proximity, keypad, IR, ...)
- External and internal push button
- Alarm relay
- Door open relay
- Must connect the readers in BUS RS485

WARNING: It is important to connect a resistor of 120 Ω between the two wires of the Bus RS 485 at the last reader.

D. ELEVATOR RELAY BOARDS

- Wiring to, the control unit by 2 wires (Bus RS485, twisted pair, category 5)
- 14 Relays
- configuration by dipswitch

II.GETTING STARTED

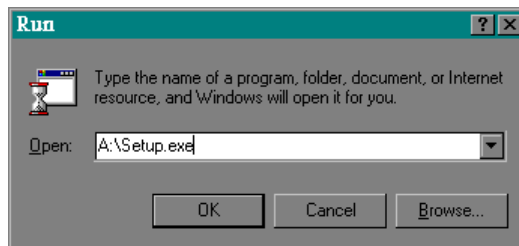
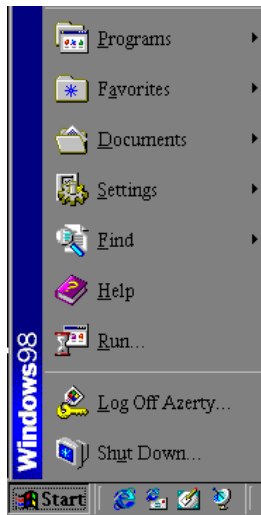
After verifying carefully all the connections, then the control unit can be connected to a power supply of 12 V DC or AC. The unit is now ready to be programmed.

III.INSTALLATION OF THE UGM SOFTWARE

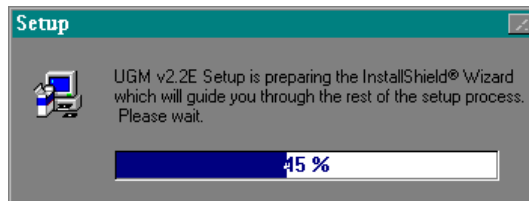
Place the UGM installation Disk (1/2) into the your floppy drive ("A"), then on the Window 95 taskbar click on "Start»:



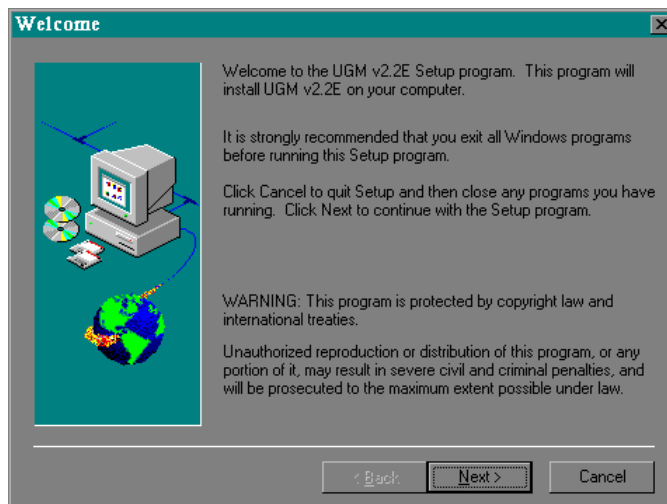
And choose the "Run" item:



Type "A:\Setup.exe", and press enter ("A" being the letter of your floppy drive).
Follow the on screen instructions :



The Install Shield program displays the next window:



Press on the "Next" button.

The next window displays the license agreement, click on the "Yes" button to accept this agreement.

Enter your name and your company name:

Name:

Company:

These two information are necessary if you want to continue the software installation. After entering the information click on the "Next" button.

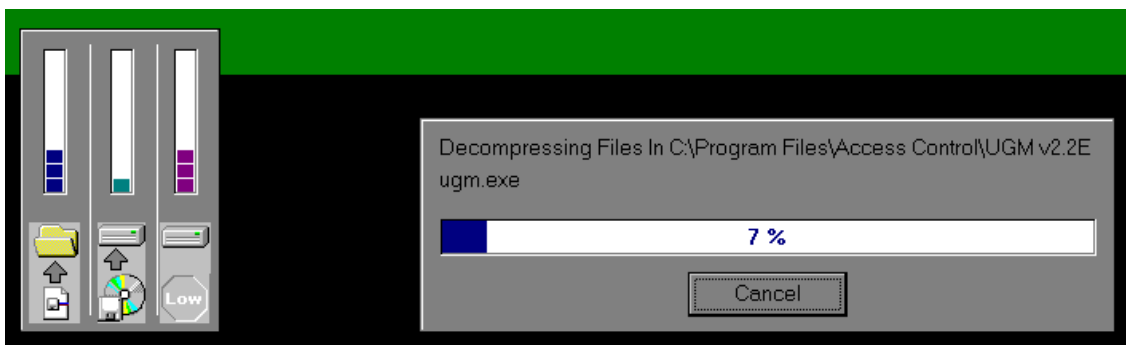
The next window allows you to choose the destination directory of the software.

Click on "Next ><":

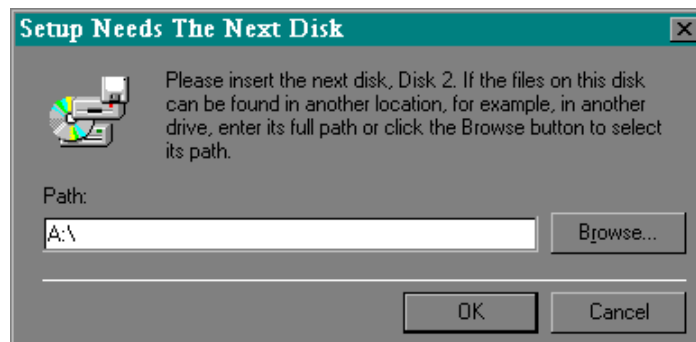
The next window allows you to choose the program group, in which the icon will appear, keep the default value by clicking on "Next" button.

The next window displays the different option you have chosen, check all of them before clicking on "Next >".

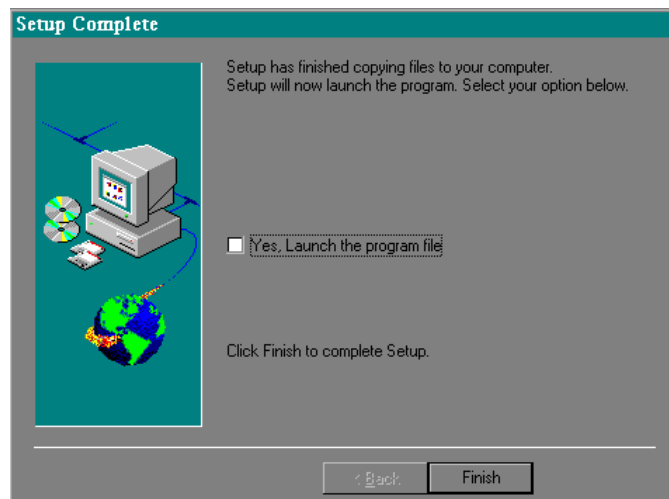
The program is getting installed:



After a couple of minutes, the installation disk asks to insert the second disk in your floppy drive (2/2).

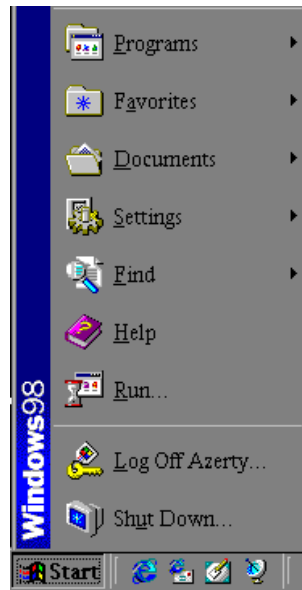


The UGM software is installed:



Click on the button "*Finish*"

To start work with the UGM program go to "**Start**" and choose "**Program**"



then choose " UGM v2.5E " and "UGM". Or to start the program double click on the UGM icon.



IV. ANNEX

A. *RECOMMENDED PRINTER*

KYOLINE MTP 640 KYOSHA

Paper: thermal, black printing
 width 112 mm
 diameter 38 mm
 reference : TP50XSE2C

connection:

RS232 with DTR signal (printer ready)

format : 9600 Baud

1 start

7 bits

parity : even

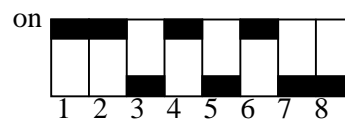
1 stop

Mode IBM

40 characters

CR = CR return of the carriage

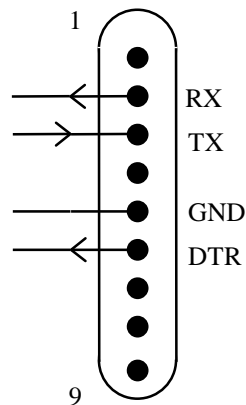
dips switches of the printer



signal DTR :

high level: printer on line

low level: printer off line



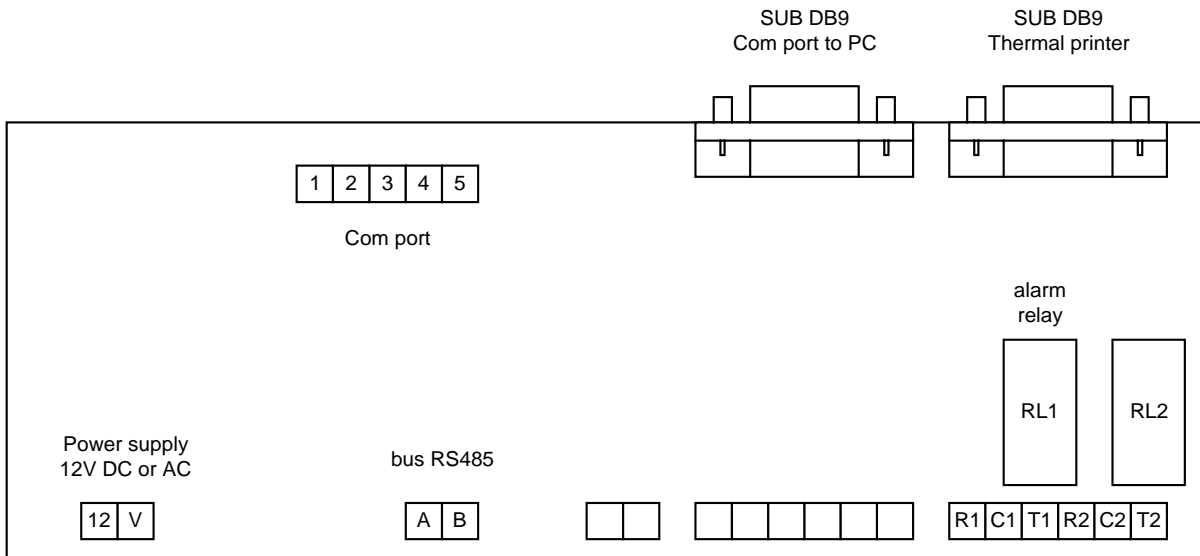
SUB.D 9 points
Male

Paper error :

When the paper tray is empty, the printer light blinks fast, the information is sent to the printer which memorize the data in buffer.

Place a paper roll in the tray and press on the button advance paper, close the cover, the light is blinking slowly, press on the button advance paper, the printer is printing all the content of the buffer.

B. CONNECTORS ON THE UGM



12V power supply 12 DC or AC

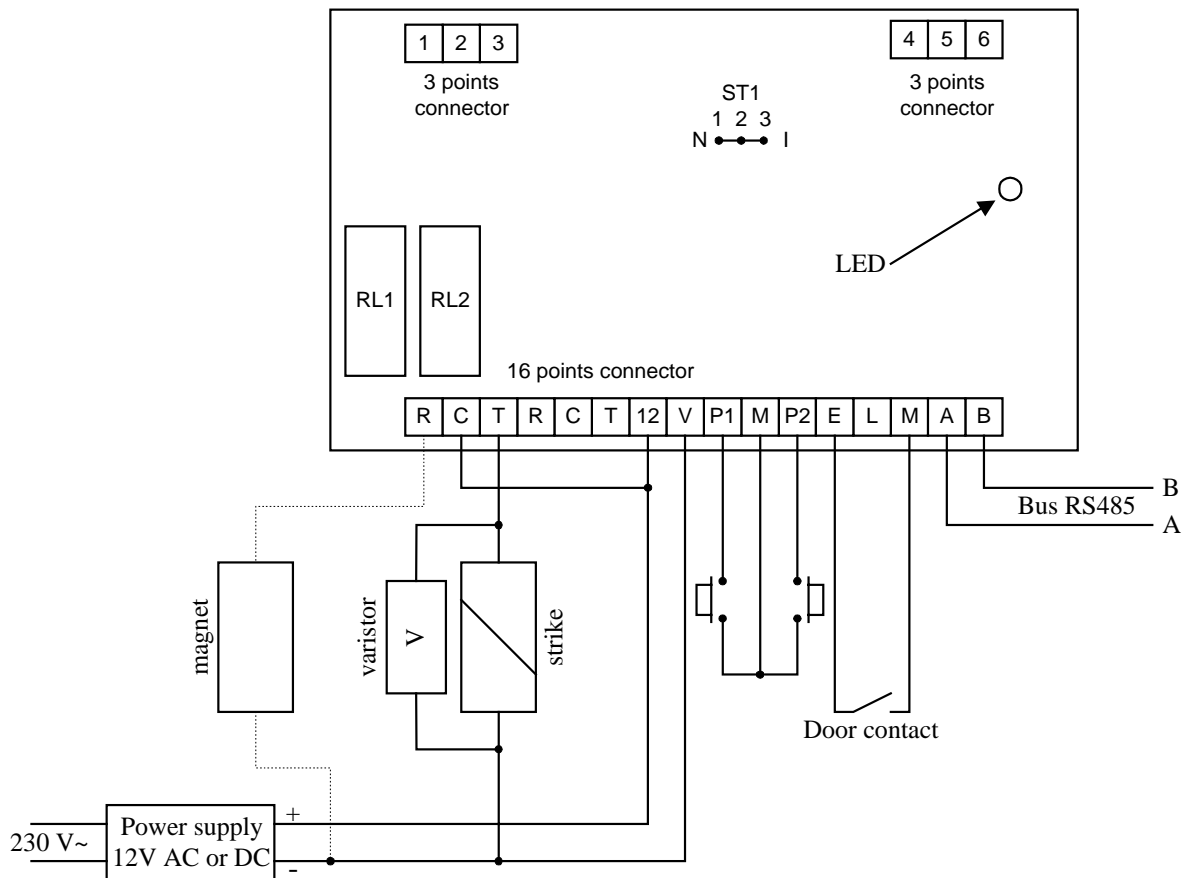
A bus RS485
 B bus RS485

R1 N/C contact alarm
 C1 common
 T1 N/O contact alarm

R2 reserved
 C2 reserved
 T2 reserved

<p>1 TX 2 RTS 3 RX 4 CTS 5 GND</p>	}	com port (in parallel to the SUB DB9)
--	---	---------------------------------------

C. CONNECTORS OF THE READER



1. LED status

- Installation: Red LED: ready to be installed
 Green LED: reader installed (put back the jumper on normal position)
- Normal: Orange LED blinking: normal operating
 Orange LED steady: default connection between the reader and the UGM
 Green LED: door open relay
 Red LED: Forced open door or door open after entering
 Green LED blinking : reader not installed or deleted.

2. 16 points connector

- | | | |
|---|-------------------|----------------|
| R | N/C contact alarm | |
| C | common | |
| T | N/O contact alarm | |
| R | contact N/C door | magnet (+) |
| C | common | + power supply |
| T | N/O contact door | strike |

12V power supply 12 V DC or AC

P1 Exit push button

M common

P2 external push button

E N/C contact door closed,

L reserved

M common

If the door contact is not used, short circuit E and M of the connector.

A bus RS485 (all A must be wired between them in chain)

B bus RS485 (all B must be wired between them in chain)

3. 3 points connectors 1,2, 3 & 4, 5, 6

a) Contact key

1 connector 1

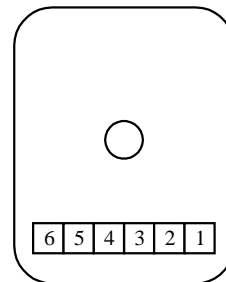
2 connector 2

3 not used

4 connector 4

5 connector 5

6 connector 6



b) Keypad

1 keypad -

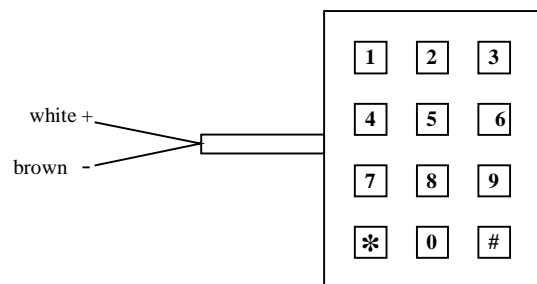
2 keypad +

3 empty

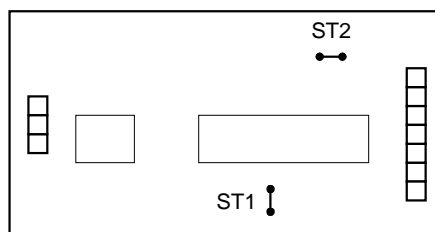
4 empty

5 empty

6 empty



On the PCB of the reader, there is two different jumpers (ST1 and ST2) :



ST1 with the jumper: 5-digit access code

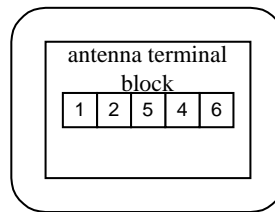
without the jumper: 4-digit access code

ST2 with the jumper: buzzer enabled

without the jumper: buzzer disabled

c) Proximity

- 1 antenna connector 1
- 2 antenna connector 2
- 3 Not used
- 4 antenna connector 4
- 5 antenna connector 5
- 6 antenna connector 6

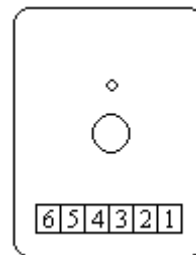


IMPORTANT:

In case of using two proximity readers in/out on the same door, it is recommended to keep a minimum distance of 20 cm between them in any direction. In case the separation is inferior to 20 cm, the two readers must be moved from each other vertically or horizontally.

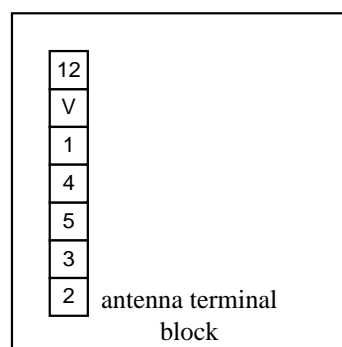
d) Infrared

- 1 connector 1
- 2 connector 2
- 7 connector 3
- 8 connector 4
- 9 connector 5
- 10 connector 6



e) Proximity LMPI/D or LMP/D extended distance (50m max)

- 1 antenna connector 4
- 2 antenna connector 1
- 3 not used
- 4 to connect to 1
- 5 antenna connector 3
- 6 antenna connector 5
- 12V antenna connector 12V

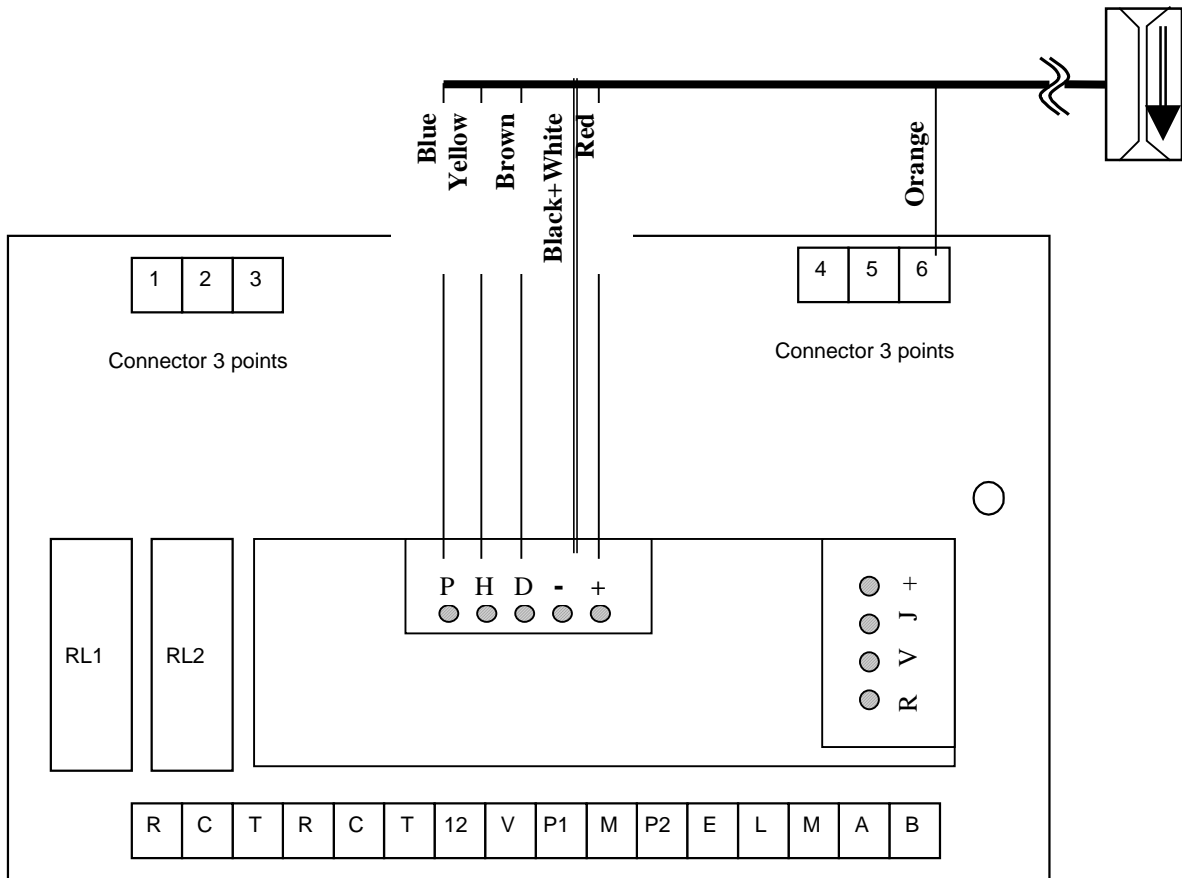


Recommended wire : 3 pairs cable SYT1 9/10 mm

IMPORTANT:

In case of using two proximity readers in/out on the same door, it is recommended to keep a minimum distance of 20 cm between them in any direction. In case of, the separation is inferior to 20 cm, the two readers must be moved from each other vertically or horizontally.

f) *Magnetic stripe reader (format Clock & Data)*

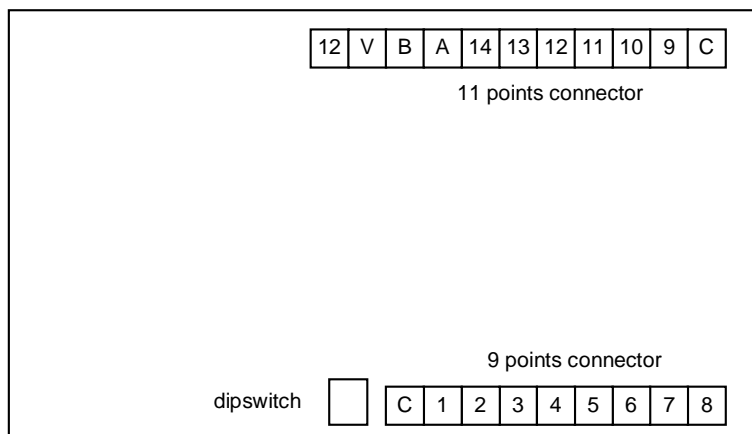


4. Jumper ST1

Jumper in position 2-3 : installation mode





Jumper in position 1-2 : normal mode


D. DESCRIPTION OF THE CONNECTORS ON THE LIFT RELAY BOARD



1. Configuration of the lift boards

Place dipswitches 1 and 2 as follow:

board 1 :  , board 2 :  , board 3 :  , board 4 :  .

(switch on position ON : )

2. 11 points connector

C : common

9 : relay 9

10 : relay 10

11 : relay 11

12 : relay 12

13 : relay 13

14 : relay 14

A : bus RS485 (all A must be wired between them in chain)

B : bus RS485 (all B must be wired between them in chain)

12 V : Input voltage DC or AC 12V

3. 9 points connector

8 : relay 8

7 : relay 7

6 : relay 6

5 : relay 5

4 : relay 4

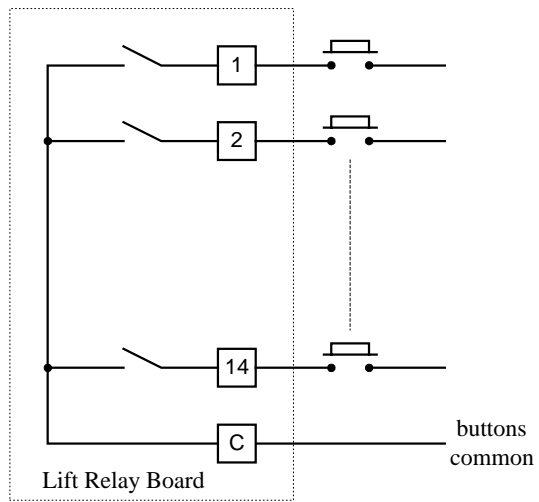
3 : relay 3

2 : relay 2

1 : relay 1

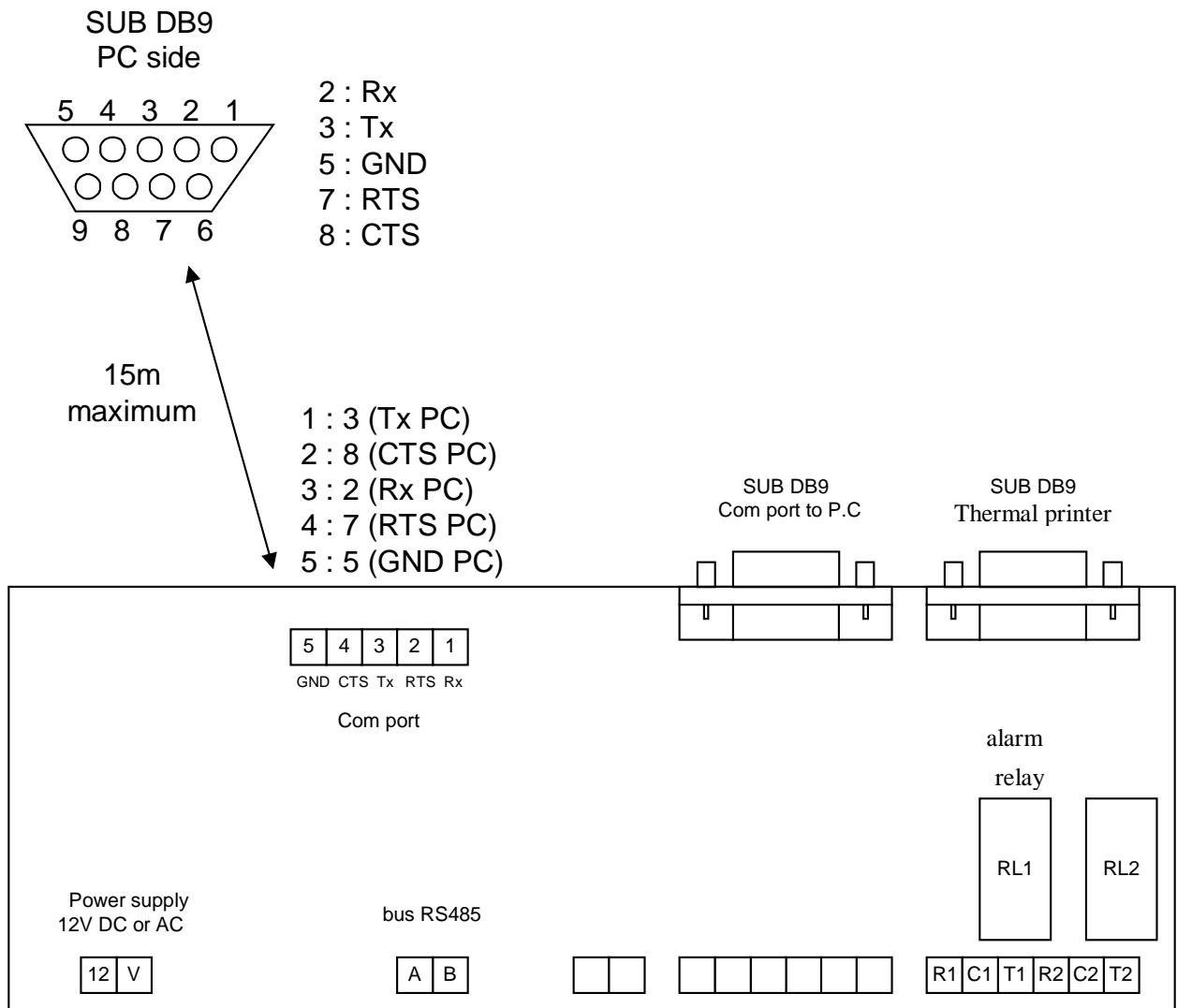
C : Common

The relays on the lift board are Normally Open contacts N/O.



Wiring in serial for the lift buttons.

F. COMMUNICATION PORT ON THE UGM



G. KCM KEYPAD

1. Description

- . key-in keypad time delay 10 seconds
- . 4 or 5-digit access code
- . 1 keypad: 12-digit keypad with built-in buzzer
 1 cable for wiring
- . 1 audible beep at every key-in
- . Access code 0 to 9 and *

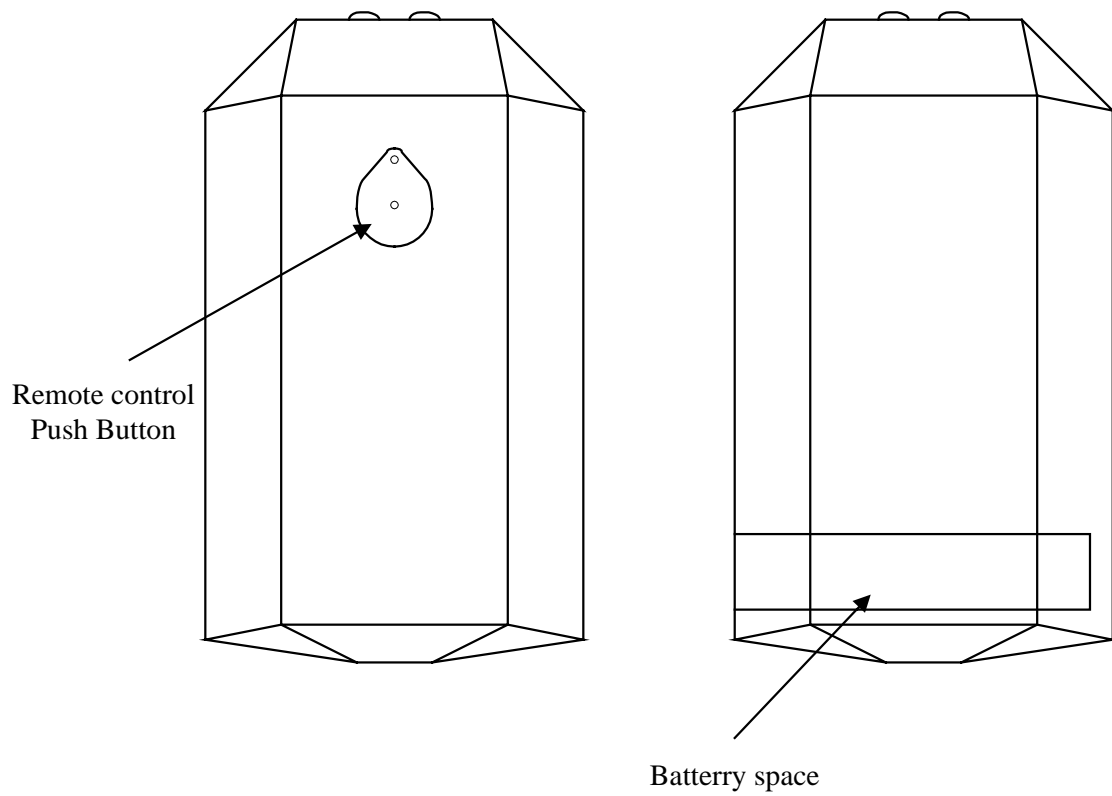
2. How to operate

Enter the 4 or 5-digit access code and then press the # button, the code is transmitted toward the control unit UGM which will activate the door relay if the access code is recognized and authorized.

IMPORTANT: when pressing on the # button this will send the 4 or 5-digit access code previously entered.

The key-in delay between each digit is of 10 seconds. Beyond this time the digit entered will be cancelled.

H. INFRARED REMOTE CONTROL



Recommended batteries to use (according to the different brands):

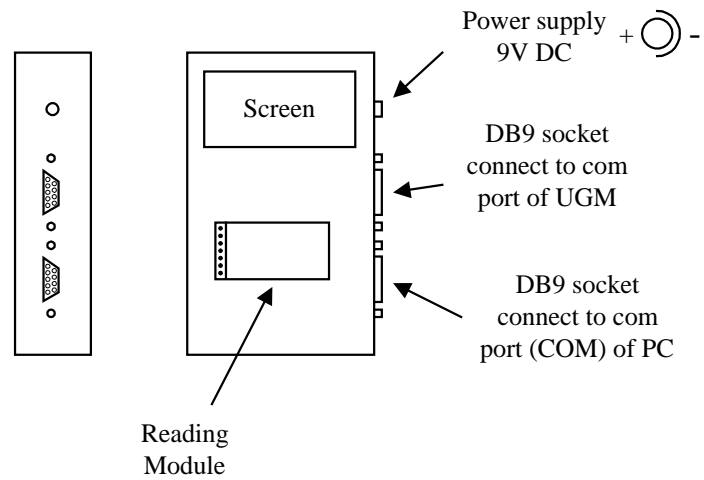
GP23A

L1028

MN21

E23A

I. RECORDING READER (BADGE ENROLLER)



Present the badge in front of the reading module. The badge code is transmitted to the PC and displayed on the screen. When it is not being used as a learning device the recording reader, connected or not to PC and UGM, can help visualising the badge code.

